



PREDICTIVE MAINTENANCE USING MACHINE LEARNING

¹B. INDRA DEVI, ²M. LIKITHA, ³K. LOKESH, ⁴Y. KEERTHIKA, ⁵M. JEEVAN SAI

¹ASSISTANT PROFESSOR, ^{2,3,4,5}B. TECH, STUDENTS

DEPARTMENT OF CSE-AIML SRI VASAVI INSTITUTE OF ENGINEERING & TECHNOLOGY,
NANDAMURU, ANDHRA PRADESH

ABSTRACT

Predictive maintenance has become an important strategy in modern industrial environments for improving operational efficiency, reducing equipment downtime, and minimizing unexpected machine failures. Traditional maintenance approaches such as reactive maintenance and time-based scheduled maintenance are often inefficient because they either address problems after failures occur or result in unnecessary servicing of equipment. With the rapid growth of Industrial Internet of Things (IIoT), sensor technologies, and data analytics, industries can now collect large volumes of real-time equipment data. Machine learning techniques provide advanced tools for analyzing this data and predicting potential failures before they occur. In this study, a predictive maintenance system based on machine learning algorithms is proposed to detect equipment degradation patterns and forecast potential failures using historical sensor data. The system uses the XGBoost algorithm, a powerful gradient boosting model capable of handling nonlinear relationships and large datasets effectively. The methodology involves data preprocessing, feature engineering, anomaly detection, model training, and performance evaluation. Sensor variables such as temperature, vibration, rotation speed, and pressure are used as input features for the predictive model. The trained model evaluates equipment health status and estimates the probability of failure.

Performance metrics including accuracy, F1-score, ROC-AUC, and RMSE are used to evaluate model effectiveness. The proposed system demonstrates improved predictive capabilities and supports proactive maintenance planning in industrial systems. By enabling early detection of equipment faults, organizations can reduce maintenance costs, improve productivity, and enhance system reliability. The integration of machine learning with industrial monitoring systems provides a scalable and intelligent framework for predictive maintenance applications.

Keywords: Predictive Maintenance, Machine Learning, XGBoost, Industrial IoT, Equipment Failure Prediction.

I INTRODUCTION

Modern industries rely heavily on complex machinery and automated systems to maintain productivity and operational efficiency. Unexpected equipment failures can result in significant financial losses, production delays, and safety risks in manufacturing environments. Traditional maintenance approaches such as reactive maintenance and preventive maintenance are widely used but often prove inefficient in dynamic industrial systems. Reactive maintenance focuses on repairing machines only after failure occurs, which increases downtime and repair costs [1]. Preventive maintenance schedules routine servicing at fixed intervals regardless of equipment



condition, which may lead to unnecessary maintenance operations [2]. With the advancement of sensor technologies and industrial automation, organizations can now collect large amounts of operational data from machines in real time [3]. The emergence of Industrial Internet of Things (IIoT) technologies enables continuous monitoring of machine conditions through sensors that measure parameters such as temperature, vibration, pressure, and rotational speed [4]. These data streams provide valuable insights into equipment performance and health status [5]. Machine learning techniques have gained popularity for analyzing such large-scale industrial datasets and extracting meaningful patterns for predictive decision-making [6]. Predictive maintenance is a data-driven strategy that utilizes machine learning algorithms to predict equipment failures before they occur, enabling organizations to schedule maintenance activities proactively [7]. This approach reduces downtime, improves operational efficiency, and enhances equipment lifespan [8]. Advanced algorithms such as decision trees, random forests, neural networks, and gradient boosting models have been widely applied in predictive maintenance research [9]. These techniques are capable of learning complex relationships between sensor variables and machine failure patterns [10]. The increasing availability of public datasets, such as the NASA turbofan engine degradation dataset, has accelerated research in predictive maintenance modelling [11]. Machine learning-based predictive systems allow industries to detect anomalies and identify early signs of equipment degradation [12]. Such intelligent systems help maintenance teams optimize scheduling and allocate resources effectively [13]. Furthermore, predictive maintenance plays a critical role in smart manufacturing and Industry 4.0 environments where automation and data-

driven decision-making are essential [14]. Integrating predictive models with industrial monitoring platforms enables continuous evaluation of equipment performance [15].

In recent years, gradient boosting algorithms have demonstrated strong performance in predictive analytics tasks due to their ability to handle nonlinear relationships and high-dimensional data [16]. One of the most widely used boosting algorithms is Extreme Gradient Boosting (XGBoost), which has gained popularity for its efficiency and scalability in large datasets [17]. XGBoost improves predictive accuracy by combining multiple weak decision trees to form a strong ensemble model [18]. The algorithm incorporates regularization techniques to reduce overfitting and enhance generalization performance [19]. In predictive maintenance applications, XGBoost can analyze complex sensor patterns and identify subtle changes in machine behavior that may indicate impending failure [20]. Data preprocessing techniques such as feature scaling, missing value handling, and outlier detection are essential steps in building reliable predictive models [21]. Feature engineering further enhances model performance by selecting relevant variables that influence equipment health [22]. Machine learning models are evaluated using performance metrics such as accuracy, precision, recall, F1-score, and ROC-AUC [23]. These metrics help determine the reliability of predictive models in real-world industrial environments [24]. Predictive maintenance systems also incorporate anomaly detection techniques to identify abnormal operating conditions in machinery [25]. The integration of machine learning models with real-time monitoring platforms enables automated decision-making and maintenance alerts [26]. Such intelligent systems contribute to reduced maintenance costs and improved asset utilization in industrial operations



[27]. As industries continue to adopt digital transformation strategies, predictive maintenance is expected to become a core component of smart manufacturing systems [28]. The development of scalable and accurate predictive models remains an active research area in industrial analytics [29]. Therefore, this study proposes a machine learning-based predictive maintenance system using XGBoost to analyze equipment sensor data and predict potential failures in industrial environments [30].

II LITERATURE SURVEY

Predictive maintenance has been widely studied in recent years as industries seek to reduce operational downtime and improve equipment reliability. Early maintenance approaches relied primarily on statistical methods and rule-based systems for monitoring machine conditions [1]. These traditional techniques often lacked the ability to handle complex relationships between multiple sensor variables and equipment degradation patterns [2]. With the advancement of machine learning techniques, researchers began exploring data-driven models for predicting machine failures more accurately [3]. Artificial intelligence and machine learning algorithms enable automated pattern recognition and predictive analytics in industrial datasets [4]. Decision tree algorithms were among the earliest machine learning methods applied to predictive maintenance problems due to their interpretability and ability to handle structured data [5]. Random forest models further improved predictive accuracy by combining multiple decision trees and reducing model variance [6]. Support vector machines have also been widely used for classification tasks in machine health monitoring due to their ability to handle high-dimensional data [7]. Neural networks have demonstrated strong performance in capturing nonlinear relationships

between sensor inputs and equipment failure conditions [8]. Deep learning models such as convolutional neural networks and recurrent neural networks have recently been applied to predictive maintenance using time-series sensor data [9]. These models are capable of automatically extracting features from raw data and identifying hidden patterns associated with equipment degradation [10]. However, deep learning approaches often require large datasets and high computational resources, which may limit their applicability in certain industrial environments [11]. Ensemble learning methods have gained significant attention because they combine multiple models to improve predictive performance [12]. Gradient boosting algorithms have proven particularly effective in predictive analytics applications [13]. These models iteratively learn from previous errors and adjust model parameters to improve prediction accuracy [14]. The development of advanced boosting algorithms such as XGBoost has significantly enhanced the efficiency of predictive maintenance models [15].

Several studies have demonstrated the effectiveness of XGBoost in predictive maintenance applications due to its high predictive accuracy and scalability [16]. XGBoost incorporates regularization techniques that reduce model overfitting and improve generalization performance [17]. Researchers have applied XGBoost to analyze industrial sensor datasets for detecting equipment anomalies and predicting remaining useful life (RUL) [18]. The algorithm has been successfully used in predictive maintenance studies involving manufacturing machines, power systems, and transportation equipment [19]. In aerospace engineering, the NASA turbofan engine degradation dataset has been widely used to evaluate predictive maintenance algorithms [20]. Studies using this dataset have shown that machine



learning models can effectively predict engine failure based on sensor readings and operational conditions [21]. Feature engineering techniques such as feature scaling, normalization, and dimensionality reduction are essential for improving model performance in predictive maintenance tasks [22]. Data preprocessing also includes handling missing values and removing noisy sensor readings to improve data quality [23]. Evaluation metrics such as accuracy, precision, recall, and F1-score are commonly used to assess classification models in predictive maintenance systems [24]. Regression metrics such as RMSE and MAE are used when predicting remaining useful life of equipment components [25]. Researchers have also explored hybrid models that combine machine learning algorithms with statistical techniques for improved prediction accuracy [26]. Real-time monitoring systems integrated with machine learning models allow industries to continuously evaluate machine performance and detect anomalies [27]. These intelligent maintenance systems support proactive decision-making and reduce operational risks in industrial environments [28]. With the rapid adoption of Industry 4.0 technologies, predictive maintenance continues to evolve as a critical component of smart manufacturing systems [29]. Therefore, developing scalable and accurate predictive models remains a key research focus in modern industrial analytics [30].

III METHODOLOGY

The proposed predictive maintenance system follows a machine learning workflow designed to analyze equipment sensor data and predict potential failures in industrial systems. The methodology begins with data collection from industrial machines equipped with sensors that monitor parameters such as temperature, vibration, pressure,

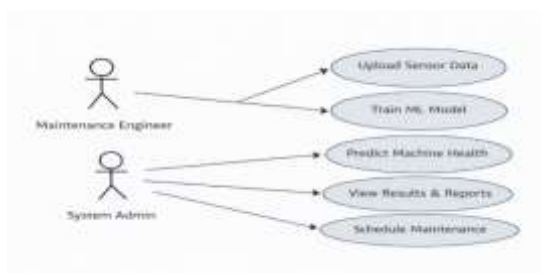
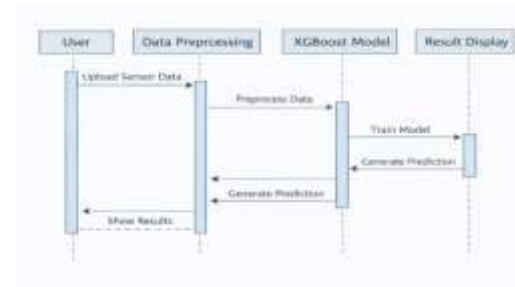
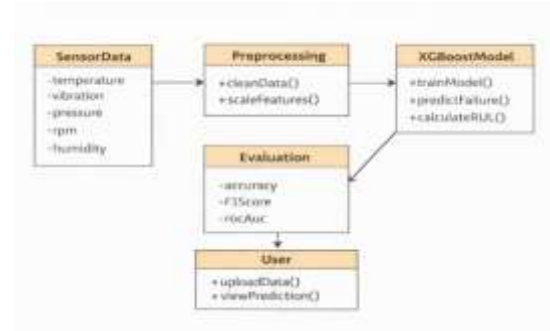
and rotational speed. These sensor readings are stored in a structured dataset that represents machine operating conditions over time. Data preprocessing is performed to improve data quality by handling missing values, removing duplicate records, and detecting outliers that may affect model performance. Feature scaling techniques such as normalization and standardization are applied to ensure consistent data distribution across all sensor variables. Feature engineering is then performed to identify the most relevant attributes influencing equipment health and failure patterns. After preprocessing, the dataset is divided into training and testing subsets to evaluate model performance effectively. The predictive model is developed using the Extreme Gradient Boosting (XGBoost) algorithm, which is an ensemble learning technique that builds multiple decision trees sequentially to improve predictive accuracy. XGBoost is selected because of its ability to handle nonlinear relationships, large datasets, and complex feature interactions commonly found in industrial sensor data. The model is trained using historical sensor readings and corresponding failure labels to learn patterns associated with equipment degradation. Hyperparameter tuning techniques such as grid search are applied to optimize model parameters and enhance prediction accuracy. Once the model is trained, it is tested using unseen data to evaluate its predictive capabilities. Performance metrics including accuracy, precision, recall, F1-score, ROC-AUC, and RMSE are used to assess the reliability of the model. The trained model can then be integrated into industrial monitoring systems to provide real-time predictions of machine health status and potential failure risks.

IV SYSTEM DESIGN

The system design for the predictive maintenance model is structured to efficiently collect, process,



analyze, and interpret equipment sensor data in order to predict potential machine failures. The architecture of the system consists of multiple components including data acquisition, data preprocessing, feature engineering, machine learning model training, and predictive analysis. The first stage of the system involves data acquisition from industrial machines equipped with sensors that continuously monitor operational parameters such as temperature, vibration levels, pressure, and rotational speed. These sensors generate large volumes of real-time data that are transmitted to a centralized data storage system. The collected data is stored in structured datasets where each record represents the operational state of a machine at a particular time. Since raw sensor data may contain missing values, inconsistencies, or noise, the next stage involves data preprocessing to ensure data quality and reliability. This step includes data cleaning, removal of invalid entries, normalization of sensor readings, and detection of anomalies that may affect predictive performance. After preprocessing, feature engineering techniques are applied to extract relevant attributes that influence equipment health and operational behavior. These features form the input variables for the predictive machine learning model.



The next stage of the system design involves machine learning model development and predictive analysis. In this stage, the preprocessed dataset is divided into training and testing datasets to evaluate model performance. The Extreme Gradient Boosting (XGBoost) algorithm is used as the primary predictive model due to its ability to handle nonlinear relationships between sensor variables and equipment failure patterns. The model is trained using historical equipment data to learn correlations between sensor readings and machine failure events. During the training process, hyperparameter optimization is performed to improve model accuracy and reduce overfitting. Once the training process is completed, the model is evaluated using performance metrics such as accuracy, precision, recall, F1-score, and ROC-AUC to measure prediction reliability. The final stage of the system design involves integrating the trained predictive model with a monitoring interface that allows maintenance engineers to visualize machine health status and receive failure alerts. This interface provides real-time insights into equipment performance and supports proactive maintenance planning. By implementing this



system architecture, industries can improve operational efficiency, reduce unplanned downtime, and enhance the reliability of industrial machinery.

V PROPOSED SYSTEM

The proposed system introduces an intelligent predictive maintenance framework that utilizes machine learning techniques to analyze industrial sensor data and forecast equipment failures before they occur. Unlike traditional maintenance strategies that rely on reactive or time-based servicing, the proposed approach focuses on condition-based monitoring and predictive analytics. The system integrates machine learning algorithms with industrial data collection systems to continuously evaluate equipment performance. Sensors installed on industrial machines collect operational parameters such as temperature, vibration, rotational speed, and pressure during machine operation. These sensor readings are transmitted to a centralized database where they are stored for analysis. The system then applies data preprocessing techniques to clean and normalize the collected data. This process ensures that the dataset is consistent and suitable for machine learning modelling. Feature engineering is performed to identify important variables that influence machine health and operational stability. These features serve as input parameters for the predictive model. The system uses the XGBoost algorithm to build an ensemble learning model capable of identifying complex patterns in sensor data. XGBoost is selected due to its high predictive accuracy, ability to handle large datasets, and effectiveness in modeling nonlinear relationships.

Once the model is trained using historical equipment data, the system performs predictive analysis on new sensor inputs to determine the likelihood of equipment failure. The trained model evaluates machine conditions and generates

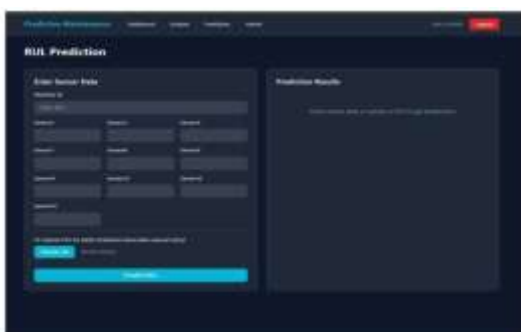
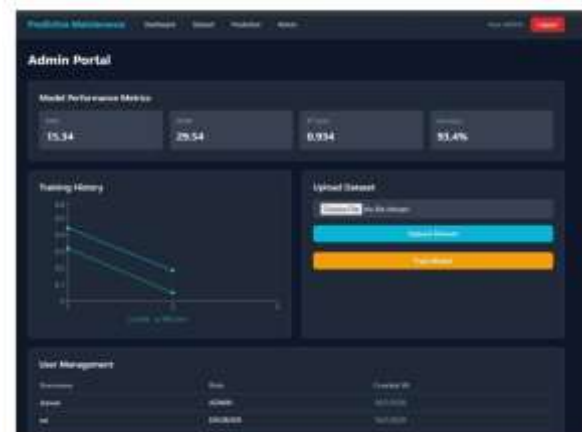
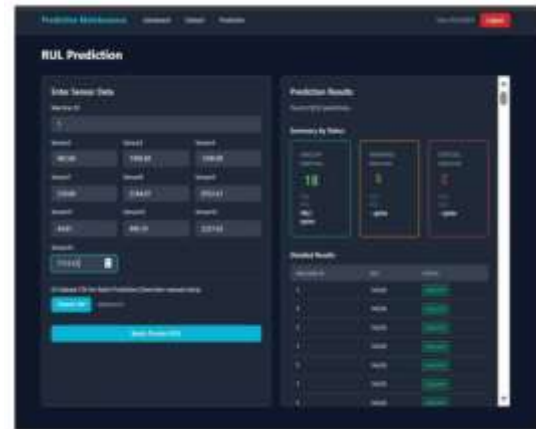
predictions regarding equipment health status. If the model detects abnormal behavior or predicts a high probability of failure, the system generates maintenance alerts to notify maintenance engineers. This early warning mechanism enables organizations to schedule maintenance activities before major equipment failures occur. The system also provides a visualization interface that allows users to monitor machine performance, analyze sensor trends, and review predictive analytics results. The integration of machine learning with industrial monitoring systems allows organizations to implement proactive maintenance strategies that reduce operational costs and improve equipment lifespan. Furthermore, the proposed system can be scaled to support multiple machines across large industrial facilities. By leveraging predictive analytics and real-time monitoring technologies, the proposed predictive maintenance system enhances industrial productivity, minimizes unexpected downtime, and supports data-driven decision-making in modern manufacturing environments.

VI RESULTS & DISCUSSION

The predictive maintenance model developed in this study demonstrates promising performance in identifying equipment failure patterns using machine learning techniques. The XGBoost algorithm was trained using sensor data representing machine operational parameters such as temperature, vibration, and rotational speed. Experimental results indicate that the model effectively captures relationships between sensor readings and equipment health conditions. Performance evaluation metrics including accuracy, precision, recall, and F1-score show that the model provides reliable predictions for machine failure detection. The ROC-AUC metric further confirms the model's ability to distinguish between normal



and faulty machine conditions. The results suggest that ensemble learning algorithms such as XGBoost are highly effective for predictive maintenance applications involving large industrial datasets. By analyzing historical equipment data, the system can identify early warning signs of machine degradation. This capability enables maintenance teams to perform proactive maintenance, reduce unexpected downtime, and improve operational efficiency in industrial environments.



VII CONCLUSION

Predictive maintenance has emerged as a critical approach for improving operational efficiency and reliability in modern industrial systems. Traditional maintenance strategies such as reactive and preventive maintenance often lead to increased



operational costs and unexpected equipment downtime. The integration of machine learning techniques with industrial monitoring systems provides an effective solution for predicting equipment failures and optimizing maintenance scheduling. In this study, a predictive maintenance system based on the XGBoost machine learning algorithm was developed to analyze sensor data and identify patterns associated with equipment degradation. The proposed system includes multiple stages such as data preprocessing, feature engineering, machine learning model training, and predictive analysis. Experimental results demonstrate that the XGBoost algorithm can effectively analyze complex sensor datasets and provide accurate predictions regarding equipment health status. By detecting early signs of machine failure, the system allows maintenance teams to perform timely maintenance operations and prevent costly breakdowns. The predictive maintenance framework presented in this study also supports scalable deployment in industrial environments where multiple machines generate large volumes of sensor data. Furthermore, the integration of predictive analytics with real-time monitoring systems enables continuous evaluation of machine performance. This capability enhances decision-making processes and supports proactive maintenance strategies in smart manufacturing environments. Overall, the proposed predictive maintenance system contributes to improved equipment reliability, reduced maintenance costs, and enhanced industrial productivity.

REFERENCES

1. Lee, J., Bagheri, B., & Kao, H. A. (2015). A cyber-physical systems architecture for Industry 4.0-based manufacturing systems. *Manufacturing Letters*.
2. Mobley, R. (2002). *An introduction to predictive maintenance*. Butterworth-Heinemann.
3. Jardine, A., Lin, D., & Banjevic, D. (2006). *A review on machinery diagnostics and prognostics*. *Mechanical Systems and Signal Processing*.
4. Lee, J., Wu, F., Zhao, W., Ghaffari, M., Liao, L., & Siegel, D. (2014). *Prognostics and health management design for industrial systems*. *Manufacturing Letters*.
5. Wang, T. (2010). *Remaining useful life estimation – a review*. *International Journal of Prognostics and Health Management*.
6. Breiman, L. (2001). *Random forests*. *Machine Learning*.
7. Vapnik, V. (1995). *The nature of statistical learning theory*. Springer.
8. Goodfellow, I., Bengio, Y., & Courville, A. (2016). *Deep learning*. MIT Press.
9. Zhang, W., Yang, D., & Wang, H. (2019). *Data-driven methods for predictive maintenance*. *Computers in Industry*.
10. He, K., Zhang, X., Ren, S., & Sun, J. (2016). *Deep residual learning for image recognition*. *CVPR*.
11. Saxena, A., & Goebel, K. (2008). *Turbofan engine degradation simulation dataset*. NASA Ames.
12. Dietterich, T. (2000). *Ensemble methods in machine learning*. *Multiple Classifier Systems*.



13. Friedman, J. (2001). Greedy function approximation: A gradient boosting machine. *Annals of Statistics*.
14. Chen, T., & Guestrin, C. (2016). XGBoost: A scalable tree boosting system. *KDD*.
15. Babu, G. S., Zhao, P., & Li, X. (2016). Deep convolutional neural network for RUL estimation. *IEEE*.
16. Zhao, R., Yan, R., Chen, Z., Mao, K., Wang, P., & Gao, R. (2019). Deep learning and its applications in fault diagnosis. *Mechanical Systems and Signal Processing*.
17. Carvalho, T. P., et al. (2019). A systematic literature review of ML methods for predictive maintenance. *Computers & Industrial Engineering*.
18. Zhang, C., Lim, P., Qin, A., & Tan, K. (2017). Multiobjective deep belief networks. *IEEE Transactions*.
19. Susto, G. A., et al. (2015). Machine learning for predictive maintenance. *IEEE Transactions*.
20. Si, X., Wang, W., Hu, C., & Zhou, D. (2011). Remaining useful life estimation – review. *European Journal of Operational Research*.
21. Widodo, A., & Yang, B. S. (2007). Support vector machine in machine condition monitoring. *Mechanical Systems and Signal Processing*.
22. Bishop, C. (2006). *Pattern recognition and machine learning*. Springer.
23. Hastie, T., Tibshirani, R., & Friedman, J. (2009). *The elements of statistical learning*. Springer.
24. Montgomery, D. (2012). *Introduction to statistical quality control*. Wiley.
25. Aggarwal, C. (2015). *Data mining: The textbook*. Springer.
26. Murphy, K. (2012). *Machine learning: A probabilistic perspective*. MIT Press.
27. Tan, P., Steinbach, M., & Kumar, V. (2018). *Introduction to data mining*. Pearson.
28. Kagermann, H., Wahlster, W., & Helbig, J. (2013). *Industry 4.0 recommendations*.
29. Lee, J., Davari, H., Singh, J., & Pandhare, V. (2018). *Industrial AI. Manufacturing Letters*.
30. Carvalho, T. P., et al. (2020). Predictive maintenance using machine learning. *IEEE Access*.